



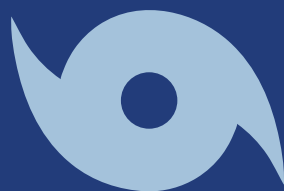
CITY CONNECTION

Summer Newsletter – July 2026



Happy 250th Anniversary, America!

GENE ADDISON – TOWN CRIER AT THE SOUTH PASADENA 1976 BICENTENNIAL



HURRICANE SEASON STARTED JUNE 1ST!

Now's the time to get ahead, stock up on supplies, get your sandbags, and review your emergency plan.

Check out pages 9–18 for storm preparedness information.

APPROPRIATIONS REQUEST APPROVED

The City of South Pasadena has been awarded \$500,000 toward the development of a resilient City Hall as part of the State's 2026–2027 budget.

After the existing City Hall building was significantly damaged during the 2024 hurricane season, the City has been working toward the construction of an accessible, mitigated facility that will better serve the community for years to come.

Special thank you to Senator Nick DiCeglie and Representative Linda Chaney for their sponsorship of the City's request for funding.

Their advocacy on behalf of the project and the welfare of South Pasadena was vital to the success of the City's request.

FISCAL YEAR 2027 BUDGET PROCESS

During the month of June, the City Commission participated in additional workshops in order to draft the City's budget for Fiscal Year 2027. As part of the process, the City Commission must determine a proposed millage rate. At the July 1, 2026 Regular Commission Meeting, the City Commission passed Resolution No. 2026–02, establishing a proposed millage rate of 5.8106 mills.

The budget and millage rate for Fiscal Year 2027 will go before the City Commission for consideration and formal approval during public hearings held on September 9, 2026 and September 16, 2026. For more information about the budget process, please contact the City Clerk's Office at cityhall@mysouthpasadena.com.



Tampa Bay Regional Planning Council's 32nd Annual Future of the Region Awards

At the Tampa Bay Regional Planning Council's 32nd Annual Future of the Region Awards, the City of South Pasadena received the Community Preparedness & Resiliency Award in recognition of Fire Station 20.

Mayor Arthur Penny, Commissioners Gail Neidinger and Lynda Thompson, City Administrator Carley Lewis, Fire Chief David Mixson, and Deputy Fire Chief Matt Wirth attended the awards luncheon on behalf of the City.



Opened in July 2024, Fire Station 20 was constructed to withstand severe weather to allow local emergency response operations to resume immediately following a storm event.

The City's investment in the station is a testament to the importance of emergency preparedness. As hurricane season approaches, residents are urged to prepare now by compiling supplies and establishing an evacuation plan.



Congratulations to Burger Monger on their Grand Opening!

On June 8, 2026 Burger Monger hosted local officials and the Tampa Bay Beaches Chamber for an official ribbon cutting at its new South Pasadena location (1530 Pasadena Avenue South).

Mayor Penny, Vice Mayor Reid, Commissioners McAlees and Thompson, and City Administrator Lewis attended to welcome the new business to the community.

Congratulations and best wishes, Burger Monger!





Arthur Penny
Mayor, City of South Pasadena
apenny@mysouthpasadena.com

"MY CITY: I'm Part of It, I'm Proud of It."

Dear Friends and Neighbors,

This July 4th, our nation marks a monumental milestone: the 250th anniversary of the signing of the Declaration of Independence. Celebrations are lighting up communities across the United States, and right here in our town, we have so much to honor.

Two and a half centuries ago, an audacious experiment in democracy was born. While our national story is still being written, this historic anniversary is a powerful reminder of the shared values that bind us together - freedom, opportunity, and unity.

Over the years, our city has grown, evolved, and overcome challenges because of the resilience of people like you. Our diverse community reflects the very best of the American spirit. Let us celebrate how far we have come and commit to building an even brighter, more inclusive future for the next generation.

Happy 250th Birthday, America!

Public Safety Update

As Independence Day and summer celebrations near, the South Pasadena Fire Department urges residents to prioritize fireworks safety. This year is special as the nation marks its 250th anniversary, with communities nationwide holding patriotic events.

Residents should watch out for neighbors, pets, and the environment - fireworks can stress pets and pose fire risks if debris lands on dry vegetation. Used fireworks should be soaked in water before disposal, and malfunctioning ones should not be relit or handled immediately after use.

The Fire Department urges responsible celebration, adherence to local laws, and the use of safety precautions to protect everyone. Prioritizing safety ensures a safe, memorable holiday.

Community Improvement Department Update

- We completed our 5-year Community Rating System Verification Visit in June 2025. The process went very well, and we have been told that we will be moving up to class 7, which will increase our flood insurance discount for our residents to 15%.
- In May 2026, we received 124 permit applications, compared with 162 in May 2025.
- We issued 89 permits in May 2026, compared with 93 in May 2025. In May 2026, we conducted 310 inspections, compared with 429 in May 2025.
- Anyone interested in signing the evacuation pledge can do so at the Community Improvement Department office at 6940 Hibiscus Avenue South.

Public Works Department Update

The Shore Dr. S. paving project is complete, and the finished product looks great. Also, the Oleander Way South pipe cleaning and televising were completed, and minimal silt was found in the pipes that would impede flow. The fertilizer ban is from June 1 to September 30. Visit Pinellas.gov/fertilizer for details. Help keep the water clean. Reclaimed water is a liquid nutrient. Overwatering causes leaching of nutrients. Conserve water and skip the fertilizer.

Sincerely,

Mayor Arthur Penny





Thank you to everyone who contributed to this year's Cereal for Summer campaign! The City of South Pasadena was happy to serve as a collection site for the Cereal for Summer program organized by Feeding Tampa Bay and Channel 10 News WTSP again this year. Children who rely on free meals at school often go hungry during the summer months. The Cereal for Summer campaign collects donations of breakfast foods to help fill this gap and fight child hunger. Special thanks to IAFF Local 747 Firefighters Union, Bay Island and Burger Monger for their generous contributions this year.

For more information and ways to help, visit www.feedingtampabay.org.

PULLING PERMITS FOR STORM REPAIRS?

To obtain permits for storm repairs in South Pasadena, Florida, you'll need to visit the Community Improvement Department.

Their office is located at 6940 Hibiscus Avenue South, South Pasadena, FL 33707.

The department is open for walk-ins, Monday through Friday, from 7:30 A.M. to 12:30 P.M.

Remember, before starting any storm-related repairs, ensure you secure the necessary permits, as all repairs and reconstruction require a permit and inspection, regardless of the extent of the damage.



Congratulations Lieutenant Massey

Promoted on March 27th, Lt. Massey has been with the South Pasadena Fire Department for 9 years, with a total of 18 years of experience as a firefighter and 16 years as a paramedic.

Lt. Massey says, "Firefighting has taught me that leadership isn't a title, it's a privilege and a responsibility that you earn every single day."



Pinning Ceremony

On May 12, 2026, a pinning ceremony was held to recognize several members of the South Pasadena Fire Department.

The City was honored to recognize them for their courage, commitment, and selflessness in service to the community. Thank you for answering the call!



Participants:

FF/PM Brendan Smith
 FF/PM Ryan Bartlett
 FF/PM Joshua Martinez
 FF/PM Bruno Levy
 FF/PM Michael McKenzie
 FF/EMT Stephen Weaver
 FF/EMT Alejandro Salamanca
 FF/EMT Marcus Fields
 LT/PM Jarrad Negron
 LT/PM Kevin Massey
 DC Matthew Wirth



SOUTH PASADENA FIREFIGHTERS IN ACTION

On Saturday, May 2, 2026, the South Pasadena Fire Department stood alongside multiple agencies in response to a devastating fire at the Marine Science Laboratory on the USF St. Petersburg campus. What followed was hours of coordinated, relentless work. Firefighters battled intense conditions while fighting the blaze.

We are incredibly grateful for the bravery and professionalism of our South Pasadena Firefighters and every department that responded. Today, and every day, we thank you for your service, your sacrifice, and your unwavering dedication to protecting others.

Photo Credit: Fireground 24 Photography



K9 EMERGENCY CARE TRAINING



In June, South Pasadena Firefighters participated in specialized K9 Emergency Care training provided by TGH Aeromed.

This hands-on course equipped our firefighters with valuable skills to provide emergency medical care to law enforcement K9s in the field, including bleeding control, airway management, shock treatment, medication administration, and other critical lifesaving techniques.

Working dogs play an essential role in protecting our communities, and this training helps ensure our first responders are prepared

to care for these four-legged heroes when every second counts.

Thank you to TGH Aeromed for providing this important educational opportunity and for their commitment to advancing emergency care throughout our region.

Sponsor Your Sun Bench Today!

Want to make your mark on South Pasadena? Consider sponsoring a Sun Bench! For a one-time cost of \$400, a personalized plaque will be added to the available bench of your choosing.



For more information, visit:

www.mysouthpasadena.com/community/sun_benches



Milestone Anniversary



Shawn Shimko Public Works Director 30 Years

Congratulations on this incredible milestone, and thank you for your dedication to the South Pasadena community!

LET'S CELEBRATE



Recognition of Service

Join us in thanking the following employee for their service with the City:

Cayce Fox, Maintenance Worker 10 Years

Congratulations!

PERMIT REMINDER

Be sure to only hire licensed contractors when having work done at your house, condo or business. Almost all items require a permit. These items must be included in substantial improvement/damage packets per FEMA guidance.

All contractors must have an active state license and submit certificate of liability and worker's compensation documentation from their insurance company before they can work or be issued a permit in the City of South Pasadena. This is done to ensure that only qualified, licensed and insured contractors are doing work for the residents of our community.



Remember, as the property owner, it is your responsibility to make sure that a permit has been obtained and posted prior to work being performed. If there are any questions as to whether or not a permit is necessary, please do not hesitate to contact the Community Improvement Department at 727-343-4192 between the hours of 7:30 am and 3:30 pm.



SUMMER SANDBAG STATION

Prepare Now!

Self-serve sandbag station will be open on weekends starting July 11 – first come, first served!

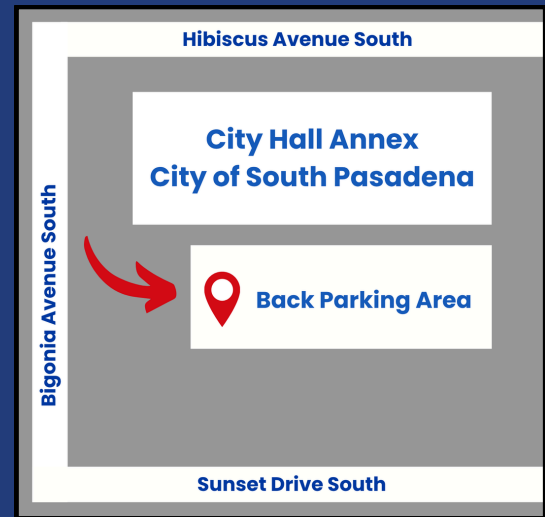
LIMIT 10 SANDBAGS PER HOUSEHOLD

PLEASE NOTE: STATION IS SELF-SERVE



Pickup Location

Located behind the City Hall Annex Building at 6940 Hibiscus Avenue South. Enter from Bignonia Avenue South into the back parking area.



Sandbag Storage Tips & Tricks

1. Store in a Cool, Dry Place

- Keep sandbags out of direct sunlight and away from moisture. Garages, sheds, or covered outdoor areas work best.

2. Elevate Off the Ground

- Use pallets, boards, or shelves to keep the sandbags off concrete or soil. This helps prevent mold, rot, and moisture absorption.

3. Cover with a Tarp

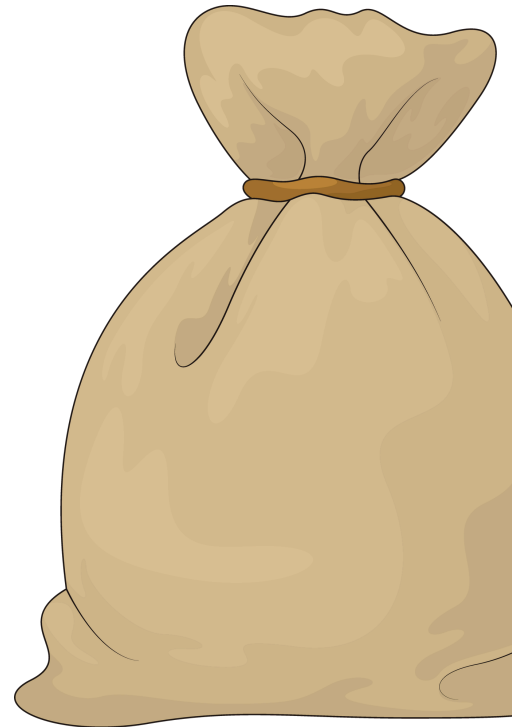
- If storing outside, protect sandbags with a waterproof tarp. Anchor the tarp securely to block rain and UV rays.

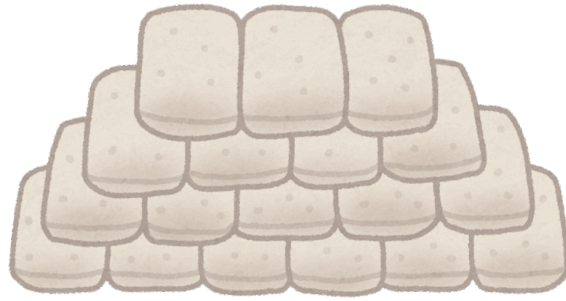
4. Stack Neatly & Securely

- Stack bags in a stable, staggered brick-like pattern. Limit stacks to 3–4 feet high to prevent slumping or tearing.

5. Inspect Periodically

- Check for rips, mold, or dampness every few weeks. Replace any damaged bags early to avoid last-minute surprises.





Best Practices for Using Sandbags

Lay a Solid Foundation

- Start with a plastic sheeting barrier (optional but helpful) on the ground to prevent water seepage.
- Place the first row of sandbags lengthwise and overlap like bricks for stability.

Stack in a Pyramid Shape

- Stack bags in a staggered brickwork pattern.
- Build up in layers. Each layer should taper inward to form a pyramid shape for better resistance.

Tuck, Fold, and Fluff

- Tuck the open end of each bag underneath to keep sand inside.
- Shape each bag to fit snugly against the others. Tight seams block water more effectively.

Redirect, Don't Block

- Use sandbags to divert water away from structures, not try to create a watertight wall.
- Focus on protecting entry points like doors, garage openings, and low windows.

Anchor and Secure

- In high wind areas, add weights or tie-downs on top to prevent displacement.

Leave Gaps for Drains

- Avoid blocking storm drains completely. This can worsen local flooding.
- Don't dump sand in storm drains or yards.
- Follow local disposal guidelines. Many cities offer collection sites for used bags.

**DON'T LET SANDBAGS GIVE YOU A FALSE SENSE OF SECURITY.
THEY CAN HELP WITH MINOR FLOODING, BUT THEY WON'T KEEP YOU SAFE
DURING A STORM SURGE.**

EVACUATE WHEN INSTRUCTED.



WHY SOUTH PASADENA RESIDENTS MUST EVACUATE DURING A MANDATORY ORDER

The City of South Pasadena lies entirely within Level A, the highest-risk evacuation zone in Pinellas County. When a Mandatory Evacuation Order is issued by Pinellas County Emergency Management, it is based on a serious and imminent threat—storm surge flooding, the leading cause of hurricane-related deaths.

Why Evacuate?

Evacuation orders are not issued lightly. They are designed to save lives. In Level A zones like South Pasadena, storm surge can quickly overwhelm homes, roads, and infrastructure. Even a Category 1 hurricane can produce dangerous flooding in our community. If you're in the evacuation zone, you must leave when an order is given.

In addition, residents of mobile homes and manufactured homes must always evacuate, regardless of evacuation zone, due to the risk of wind damage.

Know Your Zone

Evacuation zones are based on storm surge risk. Know your zone before the hurricane season and monitor local updates. Visit disaster.pinellas.gov to confirm your zone and stay informed.

When a Storm Is Approaching

- Fill your gas tank or charge your electric vehicle
- Gather cash, medications, important documents, and valuables
- Prepare your emergency kit
- If registered for special needs transportation, expect a call from the county
- Check on neighbors who may need help evacuating

When the Evacuation Order Is Issued

- Finalize your preparations and leave as early as possible
- Turn off utilities if you're leaving your home
- Monitor disaster.pinellas.gov for updates and shelter openings
- If using special needs transportation, be ready for pickup
- Be out of the area before storm-force winds arrive

Timing Is Everything

Delaying your evacuation is dangerous. Roads may close, emergency services may not be able to assist, and your options may disappear. Leave early, stay informed, and take action when the order is issued. Your safety—and the safety of your loved ones—depends on it.



“Run from the water. Hide from the Wind.”

Picture the Threat

Storm surge is not just a coastal hazard. This graphic shows examples of storm surge scenarios to illustrate how far inland storm surge can be pushed and the damages it can cause. Storm surge will impact coastal waters first and continue to push inland. For Hurricane Ian, storm surge reached up to 15 feet at the coast on Fort Myers Beach, and was pushed 15 miles inland. Along rivers and waterways, storm surge was pushed up to 24 miles inland, with a depth up to eight feet. Evacuation orders are issued to move people out of harm's way.

If the weather forecast says surge height could be...

Wind will affect the entire county. Mobile home residents and residents who are dependent on electricity must always evacuate due to winds for all category hurricanes.

5-7 feet

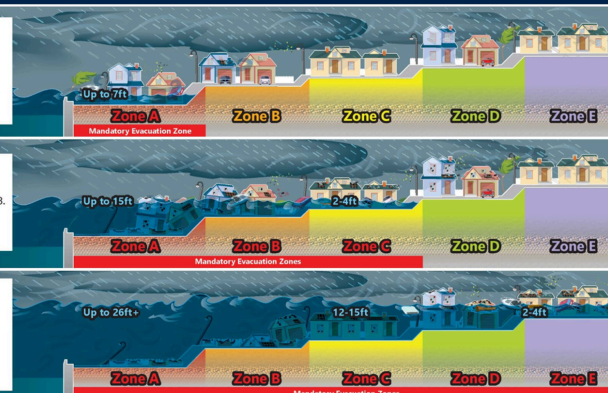
- Roads are flooded; cars are flooded.
- Fast-moving storm surge may enter homes, with water above electrical outlets.
- Life-threatening conditions.

12-15 feet

- Storm surge is up to house rooflines in Evacuation Zones A and B.
- Homes can be moved from their foundations.
- You are not likely to survive this.

26+ feet

- Homes in Zones A and B may be swept off their foundations.
- Catastrophic damage along the coast.
- Extensive flooding in all zones: inside homes, cars, on roads.
- You are not likely to survive this.



SPECIAL NEEDS

Hurricane Preparedness

The best time to prepare for an emergency is well ahead of time. When you prepare from a position of safety and calm, you and your caregivers can better cope with an emergency or disaster situation when it happens. An emergency or disaster may present unique challenges for people with disabilities and special needs. If you or someone you care for has a disability or special need, you may have to take additional steps to prepare yourself and your family.

Here's what you need to get ready for an emergency or disaster:

Form a Personal Support Network:

These are the people you should involve in your emergency planning and can help you in an emergency situation. They include your nearby family, friends, caregivers, neighbors and co-workers. Be sure to give at least one trusted member of your support network a key to your house or apartment. Also, let members of your support group know where you store your emergency kit. Most importantly, you should not rely on just one person, but have at least three or more people you can call on for help.

Complete a Personal Assessment:

Make a list of your personal needs and your resources. You need to take into account what you will be able to do for yourself and what assistance you may need before, during and after a disaster such as a hurricane. This should include daily living needs (personal care/personal care equipment, adaptive feeding devices and electricity-dependent equipment), your ability to get around before, during and after a disaster (cleaning up disaster debris, transportation and blocked roads) and evacuating if necessary.

Get Informed:

Know about the specific hazards that threaten your community (hurricanes, tornadoes, wildfires, etc.). Learn about community disaster plans and community warning systems and find out more about special assistance programs. Local citizens with disabilities and special needs should register with <https://pinellas.gov/special-needs>.

Write It Down:

Keep a copy of important phone numbers and other contact information for loved ones, medical providers and emergency services as part of your emergency communications plan.

Create an Emergency Kit:

Your emergency kit should have supplies specific to your special needs. A complete list of suggested items can be found on page 15.



SURVIVING THE STORM

IT'S EVERYONE'S RESPONSIBILITY



STORM PREPAREDNESS GUIDELINES

The City of South Pasadena suggests utilizing the following guidelines in helping you prepare for the upcoming Hurricane Season. As we've seen in past seasons, even a single storm can have a dramatic impact on the community. The South Pasadena Fire Department urges all residents to prepare for hurricane season, regardless of the forecasted activity, as storms can affect us in unexpected ways. Be sure to have your emergency plans in place and stay informed as the season approaches.

PRE HURRICANE SEASON MAINTENANCE

Preparations should be completed long before the beginning of hurricane season, June 1st.

- Cut back all trees and weak branches that could contact buildings.
- Thin your foliage so wind can flow freely through branches, decreasing the chance that the trees/plants will be uprooted. Keep gutters and drains free of debris.
- Place trimmings at the curb on Tuesdays/Fridays - the trimmings should not exceed 4 feet in length and 6 inches in diameter, tied in bundles.
- Place small pieces of vegetation, such as leaves, twigs, etc., in bags or cans that weigh less than 40 lbs. When full, place at the curb on your scheduled household waste pickup day.
- Clean your yard of any items that could become missiles in a storm such as old lumber, lawn furniture, barbeque grills, etc.
- Sign up for local alerts and warnings - <http://www.pinellascounty.org/alertpinellas>.
- Monitor local news and weather reports.
- Prepare to evacuate by learning evacuation routes, having a place to stay and packing a "go bag."
- Protect your property by reviewing insurance documents, making sure fuel tanks are anchored, installing sewer backflow valves and categorizing belongings.
- Collect and safeguard critical financial, medical, educational and legal documents.



ONCE A STORM HAS BEEN NAMED

- Follow guidance from local authorities.
- The City of South Pasadena is in an “A” evacuation zone.
- If advised to evacuate, grab your “go bag” and leave as soon as possible.
- Do not cut down trees, trim vegetation, do major yard work or construction projects that cause debris.
- Mass cutting places a tremendous burden on the normal collection process and there is not enough equipment or manpower to collect the additional material before the storm makes landfall. You could put not only yourself at risk but your neighbors as well.
- Do not take materials to the curb, transfer stations or landfill during a watch or warning period. Services may be suspended and facilities closed early to prepare for the storm.
- For protection from high winds, stay away from windows and seek shelter on the lowest level in an interior room. Install storm shutters on doors and windows.
- For protection from flooding, move to higher ground.
- Turn around, don’t drown. Never walk or drive on flooded roads or through water.
- Call 911 if you are in life-threatening danger.

AFTER THE STORM HAS PASSED – PLEASE BE PATIENT!

- Return to the area only after authorities say it is safe to do so. Do not enter damaged buildings until they are inspected by qualified professionals.
- Never walk or drive on flooded roads or through floodwaters.
- Look out for downed or unstable trees and power lines.
- Wear gloves and sturdy shoes to protect your eyes and feet when removing debris.
- Keep household garbage, recycling and vegetative and/or construction storm debris in separate piles.
- The City of South Pasadena’s number one priority is the collection of household garbage.
- Secure all household garbage in plastic bags or cans on your scheduled pickup day.
- Do not place any debris near or on a fence, mailbox, power line equipment, poles, transformers, downed electrical wiring, water meters or storm drains. Place it near the road so that it can be easily picked up from the debris removal trucks.
- Be prepared to repair possible damage to yard areas from the specialized equipment used to collect storm debris.
- Contact the City of South Pasadena Public Works Department at 727-384-0701 or City Hall at 727-347-4171 for updates on your collection services.

Rev. 04/2025

IMPORTANT!

****There is no reimbursement provided to any individual resident or condominium association who hires a private contractor to remove and dispose of storm-related debris.****

The City of South Pasadena asks all residents of the City to be our partners in restoring the City to its pre-storm state. Your cooperation and support enables the City of South Pasadena to complete the entire process in the quickest, safest and most efficient manner possible.





DISASTER SUPPLY KIT CHECKLIST



General

- Two week minimum supply of medication, regularly used medical supplies, and a list of allergies
- A list of the style, serial number, and manufacturer information of required medical devices
- Batteries
- Flashlights
Do not use candles
- NOAA Weather Radio
Battery operated or hand cranked
- Cash
Banks and ATMs may not be available after a storm
- Cell phone chargers
- Books, games, puzzles or other activities for children

Phone Numbers

- Maintain a list of important phone numbers including:
County emergency management office, evacuation sites, doctors, banks, schools, veterinarian, a number for out of town contacts, friends and family

Clothing

- Rain gear such as jackets, hats, umbrellas and rain boots
- Sturdy shoes or boots and work gloves

Special Needs Items

- Specialty items for infants, small children, the elderly, and family members with disabilities

First Aid

- First Aid Manual
- Sterile adhesive bandages of different sizes
- Sterile gauze pads
- Hypoallergenic adhesive tape
- Triangular bandages
- Scissors
- Tweezers
- Sewing needle
- Moistened towelettes
- Antiseptic
- Disinfectant wipes
- Hand sanitizer
- Thermometer
- Tube of petroleum jelly
- Safety pins
- Soap
- Latex gloves
- Sunscreen
- Aspirin or other pain reliever
- Anti-diarrheal medicine
- Antacid
- Laxative
- Cotton balls
- Q-tips

Food and Water

- Food
Nonperishable packaged or canned food and beverages, snack foods, juices, baby food, and any special dietary items to last at least 7 days
- Water
1 gallon per person per day
- Non-electric can opener
- Paper plates
- Napkins
- Plastic cups
- Utensils

Important Documents

- Insurance cards
 - Medical records
 - Banking information
 - Credit card numbers
 - Copies of social security cards
 - Copies of birth and/or marriage certificates
 - Other personal documents
 - Set of car, house, and office keys
 - Service animal I.D., veterinary records, and proof of ownership
 - Information about where you receive medication, the name of the drug, and dosage
 - Copy of Will
- *Items should be kept in a water proof container*

Vehicle

- Keep your motor vehicle tanks filled with gasoline

Pet Care Items

- Pet food and water to last at least 7 days
- Proper identification
- Medical records/microchip information
- A carrier or cage
- Muzzle and leash
- Water and food bowls
- Medications
- Supplies for your service animal

Find more disaster preparedness tips at FloridaDisaster.org

ALL PROPERTY IN THE CITY LIMITS OF SOUTH PASADENA IS SUBJECT TO FLOODING!

CITY OF SOUTH PASADENA FLOOD FACTS

The National Flood Insurance Program (NFIP) policies issued or renewed in the City of South Pasadena receives a 10% premium discount. According to the Federal Emergency Management Agency (FEMA), this discount is the result of the City qualifying as a Class 8 in the NFIP Flood Insurance Program's Community Rating System. The City has achieved this rating through activities such as maintenance of drainage facilities, regulation of stormwater discharge and distribution of this information as part of the Community Outreach Program.

Assistance is Available

Publications pertaining to property protection, flood safety, etc. can be obtained at South Pasadena City Hall – 7047 Sunset Drive South, South Pasadena, FL; at the Community Improvement Department – 6940 Hibiscus Avenue South, South Pasadena, FL; or through information links on the City of South Pasadena website: www.mysouthpasadena.com. Questions pertaining to flood zone, protection methods, flood elevation certificates, grant assistance, etc., please contact the City of South Pasadena Community Improvement Department at (727) 343-4192.

Flood Insurance Rate Maps

The most recent Flood Insurance Rate Map for South Pasadena went into effect on August 24, 2021. The new flood maps are available at <https://floodmaps.pinellascounty.org>. Since all of South Pasadena is in a Special Flood Hazard Area, it is important to know the base flood elevation of the property and the flood insurance purchase requirements. The City of South Pasadena has copies of elevation certificates for many structures in the community.

Are you insured?

Since 1851, only 18 hurricane seasons have passed without a known storm impacting the State of Florida. Property losses due to flooding are not covered under most standard homeowner insurance policies. You can protect your home and its contents with flood insurance through the National Flood Insurance Program (NFIP). NFIP is a federal program that enables property owners to buy flood insurance at reasonable rates in participating communities. In return, participating communities carry out flood management measures designed to protect life and property from future flooding. The Federal Emergency Management Agency (FEMA), through its Federal Insurance Administration, administers the NFIP.

As a Special Flood Hazard Area, flood insurance is required for all properties in the City of South Pasadena with a federally backed mortgage. To find out more about flood insurance for your property and its contents, contact your insurance agent. There is usually a waiting period before a flood insurance policy takes effect; so do not wait until a storm threatens before you secure the flood insurance you need.

Flood Threat

Flooding in South Pasadena can be caused by heavy rainfall that occurs in short periods of time, as is common during summer thunderstorms, and by tidal surges that accompany coastal storms, tropical storms and hurricanes. Hurricane tidal surges are the City's greatest threat and can cause flooding up to 24 hours before the "eye" of the storm reaches the coast. Because the City has low land elevations and abuts the Boca Ciega Bay, the flood threat is significant. FEMA has identified the entire City as a Special Flood Hazard Area on the Flood Insurance Rate Maps. These maps establish base flood elevations for development within these areas with the lowest permitted habitable flood levels ranging from 10 to 15 feet above sea level.

Flood Warning Systems

The Pinellas County Emergency Operations Center (EOC) works with the National Weather Service, the National Hurricane Center, and the local municipalities to monitor flood and storm threats. This information is then used to alert communities to the threats they are facing. Flood alerts are issued by: TV 8; TV 13; TV 10; and Bay News 9. For evacuation centers or other information on flooding, you can write to: Pinellas County Emergency Management, 10750 Ulmerton Rd., Building 1, Suite 267, Largo, FL 33778 OR visit <https://pinellas.gov/emergency-information/public-shelters>.

Storm Warnings

- Tropical storm watch: Tropical storm conditions are possible within 48 hours.
- Tropical storm warning: Tropical storm conditions are expected within 36 hours.
- Hurricane watch: Hurricane conditions are possible within 48 hours.
- Hurricane warning: Hurricane conditions expected within 36 hours. All preparations should be complete.



Rev. 04/2025



Flood Safety Measures

South Pasadena residents can protect themselves from flood hazards by taking measures to ensure the safety of life and property before, during, and after a flood occurs. These safety measures include:

Prepare Before the Storm

- Know your evacuation plan. Evacuation time for South Pasadena could take hours because the City's evacuation routes are prone to flooding early in a storm. Pinellas County has posted all primary evacuation routes with blue and white signs.
- Review your family disaster plan.
- Check your survival kit, important insurance papers, and have identification ready. Verify that you have food, water, medication and toiletry essentials early to avoid long lines and shortages.
- Prepare your home and yard (be sure you have all materials and tools necessary to shutter windows).
- If you have special needs, be sure your caregiver begins to implement your plan and you are registered for a special needs shelter if necessary.
- Gather special supplies for infants, children, seniors and pets.

Pinellas County EMS, the South Pasadena Fire Department and PSTA work together to provide evacuation assistance to those persons requiring special assistance enrolled in the County's special assistance program. If you are physically impaired or require special assistance to evacuate, write to: Pinellas County Emergency Management, Public Safety Complex, 10750 Ulmerton Rd., Building 1, Suite 267, Largo, FL 33778 or call 727-464-3800 to register. You can also call your nearest fire department or home health care provider. Do not wait for a storm to strike! Write or call as soon as possible for an application requesting placement into the program.

Preparation for Evacuation

Keep a battery-powered radio tuned to local stations, and if an evacuation order is given, comply with it. Even if the evacuation order turns out to be unnecessary, leaving the area is better than potentially risking the loss of life by staying.

When preparing your home prior to evacuation, it is advisable to:

- Turn off all the electricity, with the possible exception of the power to your refrigerator;
- Fill your tubs, sinks, and any available containers with water, in case fresh water is not available after the storm (Sanitize tubs and sinks with bleach, rinse and then fill);
- Shut off your waterline to prevent any contaminated water from backing up into your house;
- Move as many valuables as possible to upper floors;
- Elevate furniture, if possible;
- Create floodway openings in non-habitable areas such as garage doors;
- Seal off sewer lines to the dwelling to prevent the backflow of sewer waters. After the storm the City will be working as quickly as possible to ensure a speedy and safe return to your home.
- Keep a battery-powered radio with you so you can listen for emergency updates and news reports.
- Use a battery-powered flashlight to inspect a damaged home (The flashlight should be turned on outside before entering - the battery may produce a spark that could ignite leaking gas, if present).
- Stay off the streets. If you must go out, watch for fallen objects; downed electrical wires; and weakened walls, bridges, roads, and sidewalks.
- Do not drive through a flooded area - Don't Drown, Turn Around.
- Keep children away from the floodwaters, ditches, culverts and storm drains.
- Clean everything that has been wet.
- Use the phone only to report life-threatening emergencies.
- Watch out for animals, especially poisonous snakes.

More people are injured after a storm due to unsafe buildings, downed power lines, contaminated water, and other unsafe conditions than are injured in the storm itself. Carefully check for structural damage prior to entering a building. Use caution when re-entering the structure. Turn on electricity one breaker at a time and watch for smoke or sparks.

Property Protection

While recent construction practices and regulations have made new homes less prone to flooding, many existing structures remain susceptible. Retrofitting non-compliant buildings is a recommended approach to reduce flooding. While the property itself remains subject to flooding, the building is modified to prevent or minimize flooding of habitable space. Several approaches to retrofitting are:

- Elevation of the structure above flood protection levels
- Construction of barriers (floodwalls, berms)
- Dry flood proofing (water tight floor and wall systems)
- Wet flood proofing (construction that allows the entry and passage of flood water). This is only allowed for non-habitable structures.
- Removing or relocating items of value to higher elevation levels.

Floodplain Management

The City's Stormwater Management Regulations require new construction and substantial remodeling to meet stringent standards in order to increase the survivability of structures, reduce the cost of repair and reconstruction after a storm event, and ensure that reasonably priced flood insurance is available.

Rev. 04/2025



Drainage System Maintenance

The City continues to improve and maintain its stormwater management system. This has reduced the amount and duration of road and yard flooding during the rainy season. The City routinely inspects and performs maintenance on drainage ditches, catch basins, and culverts that comprise the City’s stormwater drainage system. If you see any areas that may need additional maintenance or if you experience any localized drainage problems, please call South Pasadena Public Works Department at (727) 384-0701.

Permit Requirements

The City administers flood management regulations that are designed to minimize the potential of flood losses in the City. Any development requires a permit from the City of South Pasadena Community Improvement Department, which ensures that all construction meets the Flood Insurance Rate Map (F.I.R.M.) elevation requirements. Such regulations include minimum elevations of the lowest living floor areas plus an additional two (2) feet of elevation known as freeboard. Flood proofing of a non-residential property will also have an additional two (2) feet of freeboard added. The placement of fill shall only be allowed for stem wall foundation and limitations on non-substantial improvements, additions and reconstruction. Following NFIP standards, the City mandates that if the cost of any reconstruction, rehabilitation, addition or other improvements to a building equals or exceeds 50% of the building’s depreciated value, then such work is considered a substantial improvement. The existing building is then required to meet the same standards as a new building.

The NFIP standards relating to substantial improvement are enforced through the development and building permitting process. Applicants for remodeling or repair of nonconforming structures (i.e., buildings which are not elevated to or above the base flood elevation) are required to submit a cost estimate of the improvement and, if necessary, an appraised value of the existing structure, to determine if the work constitutes a substantial improvement.

The building permit review is a necessary component of its participation in the NFIP, which makes flood insurance available to those who want to protect their property from flood damage. Development that occurs without permits threatens the City’s continued participation in the NFIP and the ability to obtain flood insurance. If you see development occurring without permits, protect your rights and immediately contact the Community Improvement Department at (727) 343-4192. Two funding programs are available to reduce or eliminate the long-term risk of flood damage to buildings insured under the NFIP.

Flood Mitigation Assistance

Qualified mitigation activities include elevation of the existing home or commercial structure, acquisition of the property, or relocation of the insured structure out of the floodplain. The structure must be insured under the NFIP and have suffered 2 or more flood losses; each with a claim of at least \$1,000 within any ten-year period since 1978.

Severe Repetitive Loss Program

A Severe Repetitive Loss property is defined as a residential property that is insured under the National Flood Insurance Program and has at least 4 flood insurance claim payments (building and contents) over \$5,000 each, and the cumulative amount of such claims payments exceeds \$20,000 within any ten-year period; or has at least 2 separate flood insurance claims payments (building payments only) have been made with the cumulative amount of the building portion of such claims exceeding the market value of the building within any ten-year period.

For more information go to:

FEMA/NFIP at www.fema.gov

**Pinellas County Emergency Management at
www.pinellascounty.org/emergency**

**Florida Department of Emergency Management at
www.floridadisaster.org**

**The Official Hurricane Guide for Pinellas County at
<http://www.pinellascounty.org/emergency/default.htm#hurricaneguide>**



News from the Public Works Department

What happens when fats, oils, and grease are poured down the sink?

When warm fats, oils, and grease (FOG) are poured down the sink or flushed down the toilet, they may not travel very far through your pipes before they begin to form large, nasty conglomerations with other debris and chemicals and stick to the walls of your pipes. These FOG deposits could cause future sewer backups in your home, condominium, restaurant, or other building.

The results of FOG buildup in pipes include:

- Severe reduction in pipe flow capacity
- Complete blockages
- Slow drains
- Sewage backups
- Contact with disease-carrying bacteria
- Unnecessary costly repairs
- Contamination of water sources

NO GREASE

POURING FOOD, OILS, AND GREASE DOWN THE DRAIN IS **DESTRUCTIVE AND COSTLY!**

Beware the F.O.G.

Prevent the CLOG



- Do not put oil and grease in covered collection containers.
- Do not scrape food scraps from dishes into trash cans and garbage bags and dispose of properly. Avoid using the garbage disposal.
- Do not remove oil and grease from dishes, pans, fryers, and griddles. Cool first before you skim, scrape, or wipe off excess grease.

DO NOT pour oil and grease down the drain.
DO NOT put food scraps down the drain.
DO NOT rinse off oil and grease with hot water.

**For more information contact:
Public Works Department
727-384-0701**

Rev. 04/2025



A Clean Environment Is Important To All Of Us! ONLY RAIN DOWN THE STORM DRAIN!

Pollution Prevention Is Up To You!

Did you know that storm drains are NOT connected to sanitary sewer systems or treatment plants? The primary purpose of storm drains is to carry rainwater away from developed areas to prevent flooding. Untreated pollutants such as concrete, mortar, fertilizer in the grass clippings and many more flow directly into creeks, rivers, lakes and the ocean and are toxic to fish and other wildlife. Disposing of these materials into the storm drains causes serious ecological problems – and is PROHIBITED by law.

Best Management Practices

Best Management Practices, or BMP's, are procedures that help to prevent pollutants such as chemicals, concrete, mortar, pesticides, waste, paint and other hazardous materials from entering our storm drains. All of these sources add up to a pollution problem. But each of us can do our part to keep stormwater clean. The efforts add up to a pollution solution!

What Can You Do?

- Never sweep or blow grass/lawn clippings into driveways, sidewalks, streets, gutters or storm drains.
- Always store both dry and wet materials under cover, protected from rainfall and runoff and away from storm drains and waterways.
- Keep all construction debris away from the street, gutter and storm drains.
- Never dispose of washout into the street, storm drains, landscape drains, drainage ditches or streams.
- Look for and clean up material that may have traveled away from your property after each days work.
- If you or your contractor keep a dumpster at your site, be sure it is securely covered with a lid or tarp when not in use.
- Protect dry materials from the wind. Don't allow dry products to blow into driveways, sidewalks, streets, gutters or storm drains.
- Don't place fill material, soil or compost piles on the sidewalk or street.
- During cleanups, check the street and gutters for sediment, refuse or debris. Look around the corner or down the street and clean up any materials that may have already traveled away from your property.

WHO CAN YOU CONTACT?

FOR MORE INFORMATION, OR TO REPORT ILLEGAL DUMPING, PLEASE CALL:

Community Improvement Department
(727) 343-4192

Public Works Department
(727) 384-0701

REPORT ILLICIT DISCHARGES

169-25. ILLICIT DISCHARGES

Specific prohibitions. Any discharge to the stormwater system containing sewage, oil, or petroleum products, grass clippings, fertilizers, paints or paint solvents, industrial waste or other waste materials containing any materials in violation of federal, state, county or municipal laws, rules, regulations, orders or permits is prohibited.

Stormwater 24-Hour Watchline
727-464-5060

Rev. 04/2025



DISPOSAL OF HOUSEHOLD CHEMICALS

Household Hazardous Waste Center (HHW)
2855 109th Avenue North, St. Petersburg, FL

Tuesday-Friday 7:00 a.m. – 5:00 p.m.
1st & 3rd Saturday of each month 7:00 a.m. – 5:00 p.m.
Closed on Sunday and all observed county holidays.



For more information, including what items to bring and what not to bring, call (727) 464-7500 or visit www.pinellascounty.org/solidwaste

AUTOMOTIVE/LEAD ACID BATTERIES/USED MOTOR OIL

Local drop off: Advance Auto Parts, 4901 Gulfport Blvd. South, (727) 323-2971
They will accept up to 5 gallons of motor oil.
Most auto parts retailers accept old vehicle batteries at no charge.

White Goods/Appliances (electric or gas)

Contact Waste Connections at 727-572-6800

NO FREON ACCEPTED

Household Grease

Use paper towels to absorb grease; place in regular trash.



Rev. 04/2025

2026 PINELLAS COUNTY RECYCLE GUIDE

For more information on items that can/cannot be recycled, call 727-464-7500 or visit www.pinellascounty.org/recycle

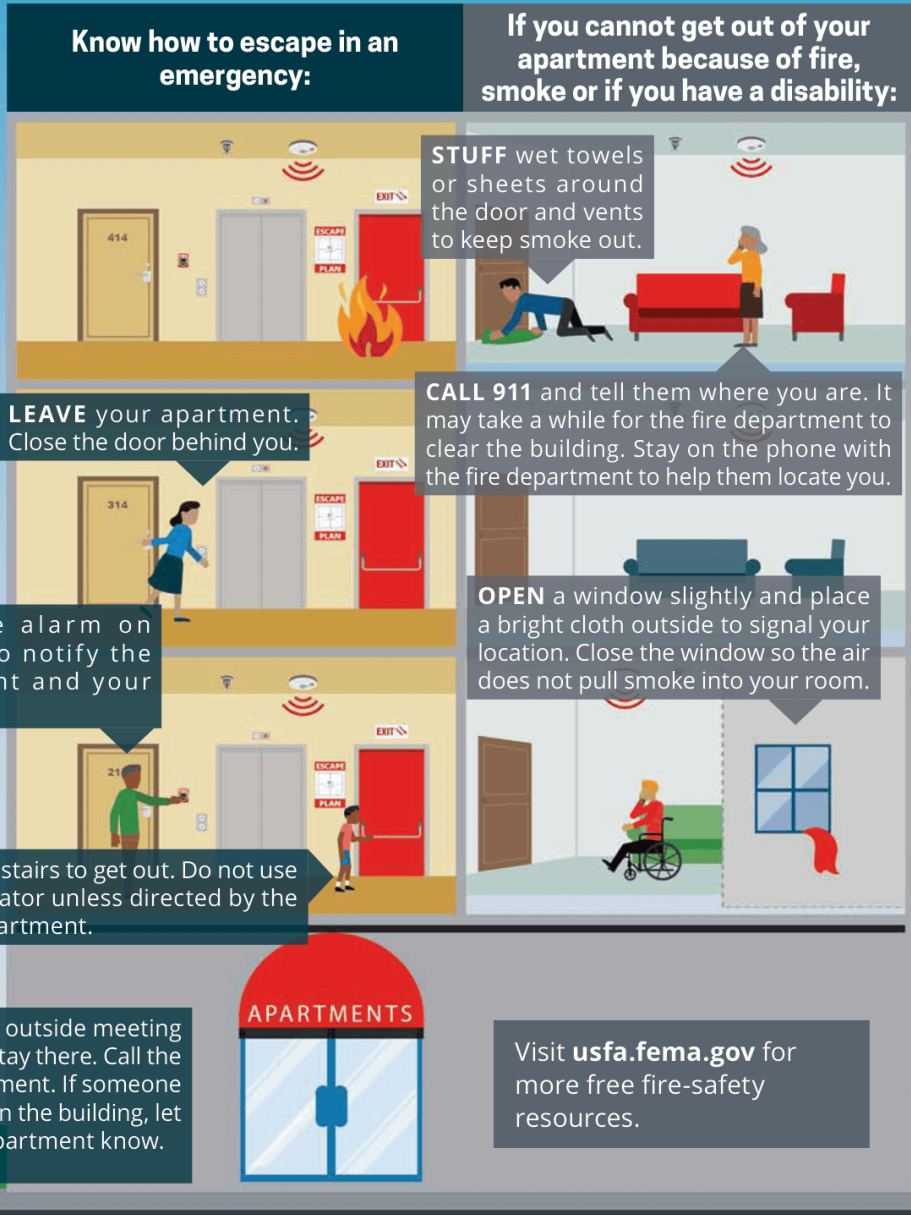


High-Rise Apartment and Condominium Fire Safety

Fires in high-rise and condominium buildings are especially dangerous. Make sure you know where all the exit stairs are in your building. If you do have a fire in your building, here are steps you can take to stay safe.

Know how to escape in an emergency:

If you cannot get out of your apartment because of fire, smoke or if you have a disability:



The City of
South Pasadena
"Our Place in the Sun" Florida





Have a Safe and Happy 4th of July Celebration!
Please call the South Pasadena Fire Department today at
727-344-1666 for any fire safety questions and concerns.

FIREWORKS start over 19,000 fires and send over 9,000 people to the Emergency Room each year in the US. Don't be a statistic. Celebrate with **safe alternatives!**



Outdoor movie night. Set up a screen and projector.

Use glow sticks, they glow in the dark and are a safe alternative to a sparkler.

Red, white and blue silly string...fun for all ages.



UPCOMING SCHEDULED COMMISSION MEETINGS

Meeting dates listed below are tentative and are subject to change. Please check the City's website or call the City Clerk's office at 727-347-4171 for up-to-date information about meeting dates.

July 1	9:00am	Regular Commission Meeting
August 18	9:00am	Agenda Meeting & Administrative Workshop
August 25	7:00pm	Regular Commission Meeting
September 1	9:00am	Agenda Meeting & Administrative Workshop
September 9	7:00pm	Regular Commission Meeting
September 15	9:00am	Administrative Workshop
September 16	7:00pm	Special Commission Meeting

COMMISSION MEETINGS

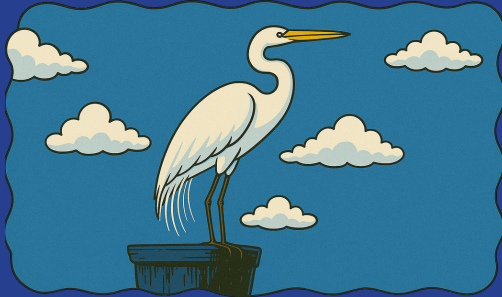
South Pasadena City Commission Meetings are broadcast live on Spectrum Channel 643 and rebroadcast the following Wednesday and Monday at 11:00 a.m.



Commission meetings can also be viewed on South Pasadena's official YouTube channel:

www.youtube.com/@CityofSouthPasadenaFL

About Town in South Pasadena



"About Town in South Pasadena" is a series designed to highlight local businesses or organizations that make the community great. Want to be selected by the City Commission to be featured in the About Town series? Contact the City at cityhall@mysouthpasadena.com for more information.

Sign up for e-news on the City's website to receive the latest news and future newsletters via email. Visit www.mysouthpasadena.com

Brochures and pamphlets on environmentally friendly landscaping are available at the Public Works Department or call 727-384-0701.

Holiday Schedule

City offices will be closed on the following dates:

INDEPENDENCE DAY- OBSERVED
FRIDAY, JULY 3 - CITY OFFICES CLOSED

LABOR DAY
MONDAY, SEPTEMBER 7 - CITY OFFICES CLOSED

**PLEASE REMEMBER TO CALL 9-1-1 IN CASE OF AN EMERGENCY.
DO NOT CALL THE FIRE DEPARTMENT ADMINISTRATION NUMBER.**

CITY HALL

7047 Sunset Dr. South

**City Commission,
Finance & Administration
Departments**

Phone: 727-347-4171
Fax: 727-345-0518

Hours: Monday - Friday
8:00 am - 4:00 pm

FIRE STATION 20

1477 Pasadena Ave. South

Public Safety Department

Phone: 727-344-1666
Fax: 727-381-4324

Pinellas County Sheriff's Office

Phone: 727-582-6200
Non-Emergency

CITY HALL ANNEX

6940 Hibiscus Ave. South

Community Improvement Department

Phone: 727-343-4192
Fax: 727-381-4819

Hours: Monday - Friday
7:30 am - 3:30 pm

Open to the Public: 7:30 am - 12:30 pm

Public Works Department

Phone: 727-384-0701
Fax: 727-347-4254